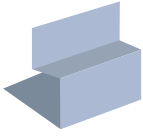




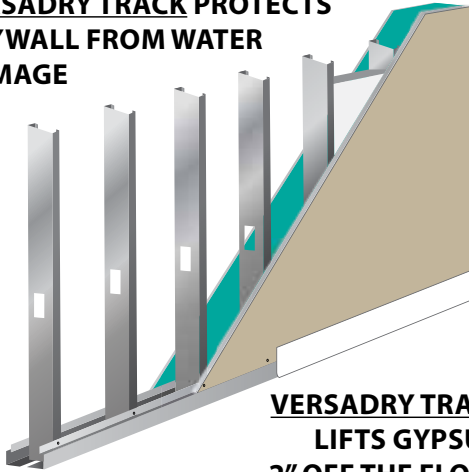
VERSADRY TRACK SYSTEM



VERSADRY DRYWALL TRACK SYSTEM

Patented system allows the installation of drywall to sit 2 inches off the floor on a steel shelf. This shelf mitigates the wicking of water both during construction and the life of the building.

VERSADRY TRACK PROTECTS DRYWALL FROM WATER DAMAGE



VERSADRY TRACK LIFTS GYPSUM 2" OFF THE FLOOR

Wall damage *without* Versadry



IMPROVED AESTHETICS

Unsightly wall damage is mitigated with VersaDry Technology. The damage created by gypsum in close contact with water and moisture on the floor is a thing of the past.



VERSADRY TRACK: 2 PIECE DESIGN (Ideal for retrofits)

Thickness Nomenclature	Non-Rate Length	1 Hour Rated	2 Hour Rated	Min Base Metal Thickness (in)	Design Thickness (in)	Min Yield Strength (ksi)	Standard Galvanization	Web Sizes (in)
VDT2-18	24'	10'	10'	0.0179"	0.0186"	33 ksi	G40	2 piece design. Any web size is possible
VDT2-30	12'	N/A	N/A	0.0296"	0.0312"			

VERSADRY TRACK: 1 PIECE DESIGN (Ideal for new construction)

Thickness Nomenclature	Non-Rate Length	1 Hour Rated + Clip	2 Hour Rated + Clip	Min Base Metal Thickness (in)	Design Thickness (in)	Min Yield Strength (ksi)	Standard Galvanization	Web Sizes (in)
VDT1-18	Max 24'	Max 24' Length (10' Recommended)		0.0179"	0.0186"	33 ksi	G40	3-5/8", 4", 5.5", 6"
VDT1-30				0.0296"	0.0312"			

VERSADRY DIMENSIONS

	Gypsum Ledge Height	Gypsum Ledge Width
Non-Rated	2.00"	0.688"
1 Hour Fire Rated	2.00"	0.688"
2 Hour Fire Rated	2.00"	1.295"

- KEEPS GYPSUM DRY
- IMPROVED FIRE RESISTANCE WITHOUT CAULK
- IMPROVED ACOUSTICAL PERFORMANCE
- ELEGANT FINAL FIT AND FINISHED APPEARANCE
- HELPS REDUCE MOLD GROWTH

VERSADRY TRACK CERTIFICATIONS:

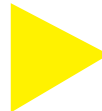
FIRE RESISTANCE:

- 3rd party tested to meet a 1 hour & 2 hour Fire Rating for UL Wall Design U423 per ASTM E119
- 1 hour Fire Rating for UL Wall Design U423 per ASTM E119 with 18mil VersaDry Track, 1 layer of 5/8" Type X Gypsum, & 20ga 3-5/8" studs spaced 16"OC.
 - 2 hour Fire Rating for UL Wall Design U423 per ASTM E119 with 18mil VersaDry Track, 2 layers of 5/8" Type X Gypsum, & 20ga 3-5/8" studs spaced 16"OC.
 - VersaDry 1 piece design with clip at floor & ceiling passed ASTM E119 1-hour and 2-hour fire and hose stream test without caulk at Intertek certified independent 3rd party test lab.

ACOUSTICAL PERFORMANCE:

- 3rd part tested per ASTM E90-09 and calculated per ASTM E413-16.
- STC = 45 for Non-Fire Rated 18mil VersaDry Track w/ 1 layer of 5/8" Type X Gypsum
 - STC = 48 for Non-Fire Rated 18mil VersaDry Track w/ 1 layer of Impact Resistant Gypsum
 - STC = 46 for 1 hour Fire Rated 18mil VersaDry Track w/ 1 layer of Impact Resistant Gypsum
 - STC = 53 for 2 hour Fire Rated 18mil VersaDry Track w/ 2 layers of 5/8" Type X Gypsum

CLICK HERE TO WATCH THE VIDEO



INNOVATION, SERVICE, QUALITY

www.BuildStrong.com • 1-866-372-6384



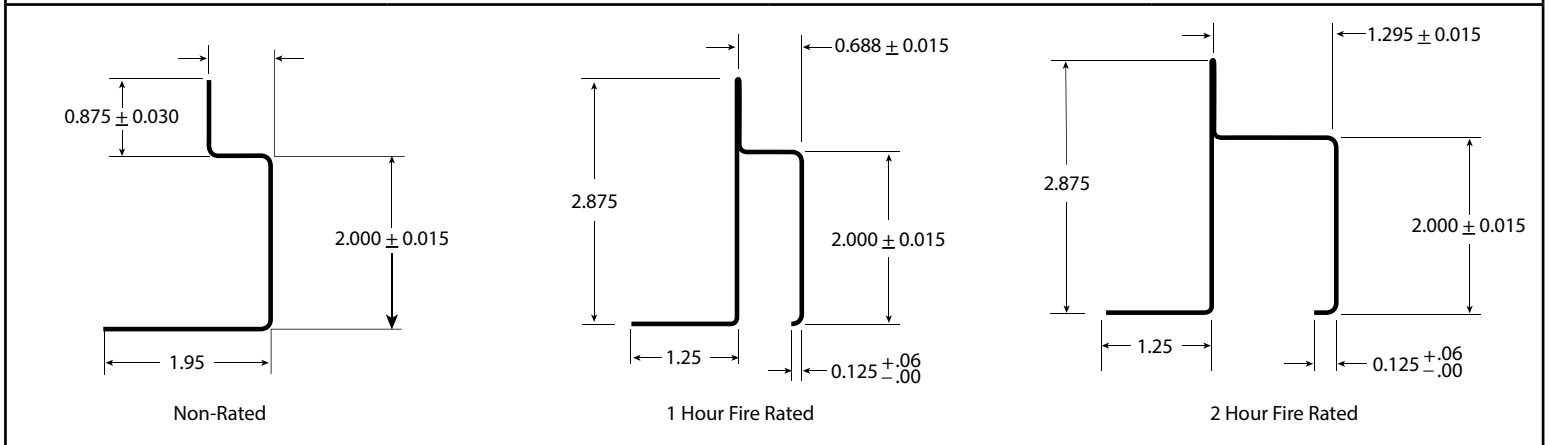
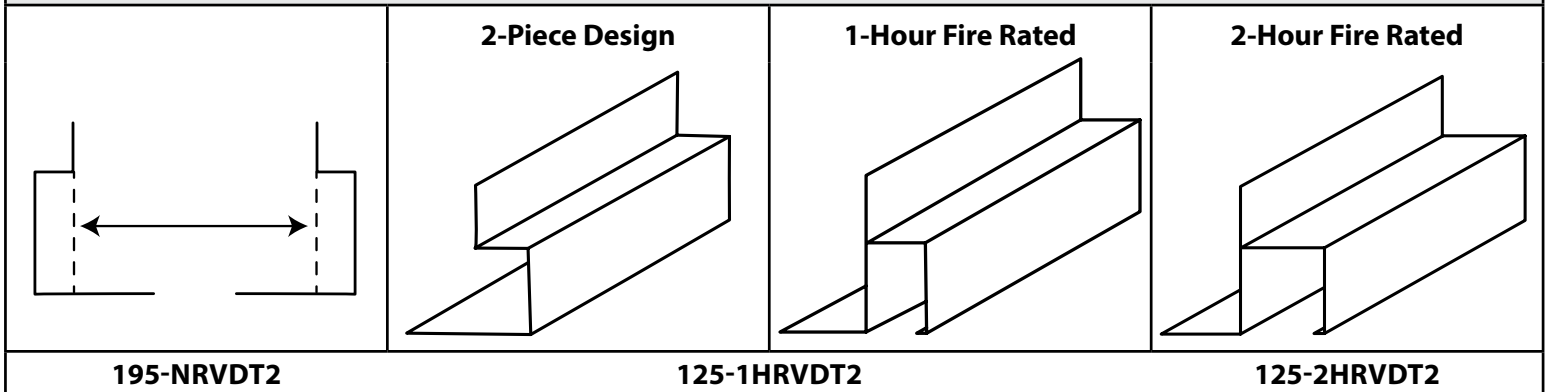


VERSADRY TRACK SYSTEM

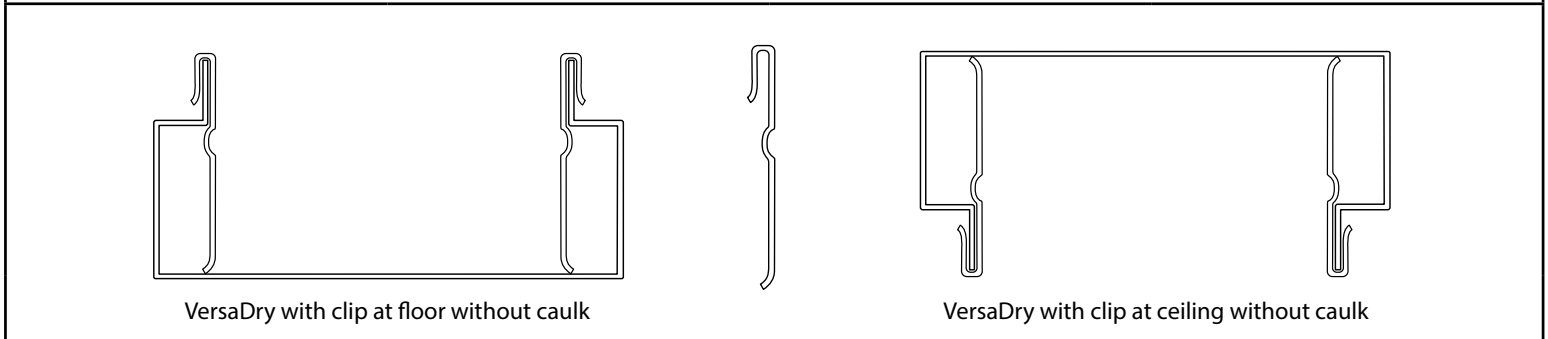
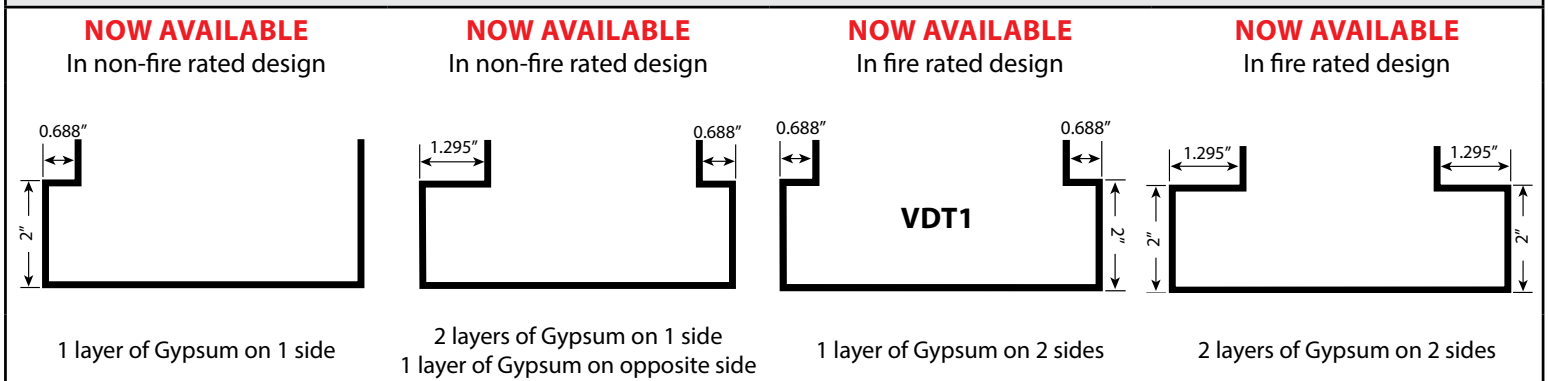


NON STRUCTURAL

2-PIECE DESIGN - NOW AVAILABLE



1-PIECE DESIGN



INNOVATION, SERVICE, QUALITY

www.BuildStrong.com • 1-866-372-6384

