



# T-BRACE BRIDGING



## INTRODUCING T-BRACE, A NEW PRODUCT INNOVATION FROM TELLING INDUSTRIES

T-Brace is used as mechanical bridging for studs. Typically, U-Channel or CRC, is attached to studs via clips or a weld to eliminate stud rotation and bending under wind or axial loads. 1-1/2" T-Brace is passed through the stud knockout and snapped securely into place with Telling's patented technology saving valuable time and money.

T-Brace features an innovative, highly engineered design that securely locks the T-Brace into the stud slot hole without the need for clips or welding for most non-structural applications.

Patent 10,309,107 | 10,590,647



### Features:

- Made of Galvanized Steel in 2 gauges: 16ga and 20ga (30mil)
- Highly Engineered for Secure Fit in Stud Knockout
- T-Brace Locks into the Stud without Clips or Welding
- Notches every 4" to accommodate 12", 16", 24" OC Stud Spacing

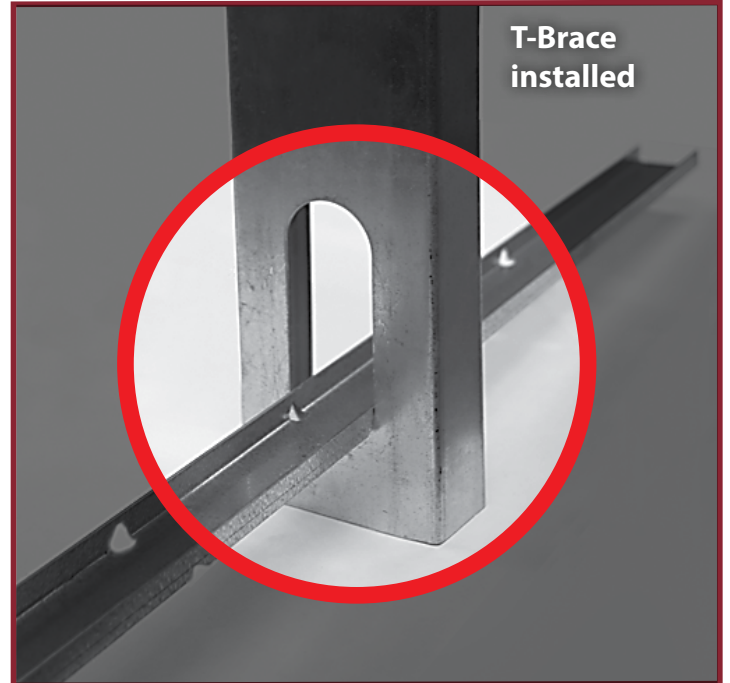
### Benefits:

- Reduces Installation Time
- 10% Savings on Material and Labor Costs
- No Clips or Welding Required
- Easy Installation due to patented design

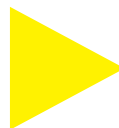
Traditional CRC channel installed with a clip



T-Brace installed



SEE  
THE  
VIDEO



Note: T-Brace is designed to lock in to studs with oval punch-outs without clips. T-Brace requires a clip to work with rectangular punch-out studs.



## INNOVATION, SERVICE, QUALITY

[www.BuildStrong.com](http://www.BuildStrong.com) • 1-866-372-6384





# T-BRACE BRIDGING



## Product Data:

- Available in galvanized steel meeting ASTM A-1003 or hot-dipped galvanized steel meeting ASTM A-653, G60.
- Lengths: 52" stock length. (Other lengths available in 4" increments).
- Patent # 10,309,107 (T-Brace), Patent # 10,508,446 (T-Bridge)

## Uses:

- Bridging, (lateral support) in walls carrying axial and/or wind loads.
- Clips are not required for many non-load bearing applications.

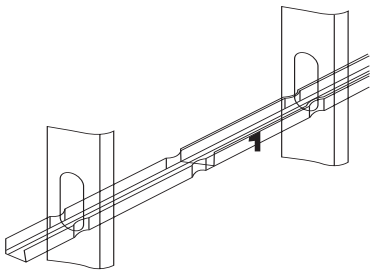
			Gross Properties								
Section	Design Thickness (in)		Fy (ksi)	Web (in)	Area (in²)	Weight (lb/ft)	Ixx (in⁴)	Sx (in³)	Rx (in)	Iyy (in⁴)	Ry (in)
TB150-54	0.0566	0.0538	50	1.57	0.132	0.45	0.0460	0.0053	0.590	0.002	0.125
TB150-30	0.0296	0.0312	50	1.57	0.074	0.25	0.0266	0.0308	0.599	0.001	0.128

			Effective Properties							
Section	Design Thickness (in)		Fy (ksi)	Web (in)	Area (in <sup>2</sup> )	Weight (lb/ft)	Ixx (in <sup>4</sup> )	Sxx (in <sup>3</sup> )	Ma-L (in-k)	Vax (lb)
TB150-54	0.0566	0.0538	50	1.57	0.132	0.45	0.0460	0.0053	1.586	1464
TB150-30	0.0296	0.0312	50	1.57	0.074	0.25	0.0259	0.0299	0.894	780

## Product Details



T-Brace with self nesting geometry to fit one part inside of another and secured with a screw.  
T-Brace locking features spaced every 4" to accommodate 12", 16" and 24" on center stud spacing.

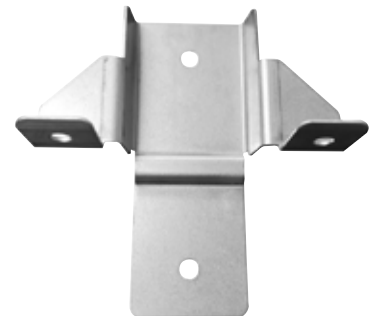


## Accessories

### T-Bridge Clip (Terminating)

### T-Bridge Clip (Joining)

US Patent # 10,508,446



T-Bridge clips are compatible with Telling's Standard CRC Bracing & T-Brace.



# INNOVATION, SERVICE, QUALITY

[www.BuildStrong.com](http://www.BuildStrong.com) • 1-866-372-6384

