

TRUE-ACTION™ SLOTTED TRACK - HEAD OF WALL DEFLECTION SYSTEM

Telling's True-Action™ Slotted Track (TAT) is an industry leading system for achieving head-of-wall deflection and fire resistance for interior and exterior walls. It meets movement and cycling requirements for ANSI/UL 2079 and is UL Classified for 1, 2, 3, and 4 hour fire-resistant ratings in head-of-wall fire-rated joint systems.

- TAT is UL Classified in over 80 approved fire-rated systems
- Two Flange options of 2.5" and 3" Slotted Track allows for your project's needed vertical movement
- Custom web, leg and lengths are available
- Positive attachment provided for wall strength
- Absorbs head-of-wall and floor extension or compression movement
- Easily integrated with traditional wall systems
- Quick Installation reduces labor costs



UL RATED DESIGNS

True-Action™ Slotted Track Framing Members For Use In Joint Systems Numbers

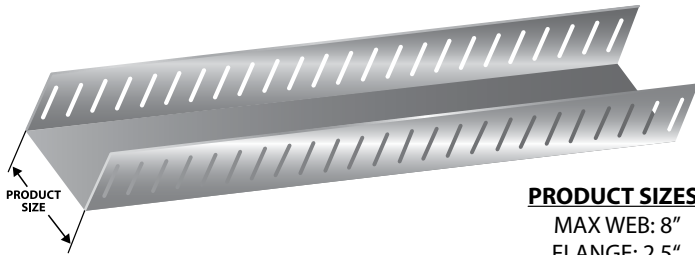
| | | | | | | | |
|-----------|-----------|-----------|-----------|-----------|-----------|-----------|-----------|
| HW-D-0003 | HW-D-0016 | HW-D-0020 | HW-D-0021 | HW-D-0024 | HW-D-0025 | HW-D-0029 | HW-D-0031 |
| HW-D-0034 | HW-D-0036 | HW-D-0042 | HW-D-0043 | HW-D-0044 | HW-D-0045 | HW-D-0046 | HW-D-0047 |
| HW-D-0048 | HW-D-0049 | HW-D-0054 | HW-D-0062 | HW-D-0063 | HW-D-0067 | HW-D-0068 | HW-D-0069 |
| HW-D-0071 | HW-D-0072 | HW-D-0073 | HW-D-0076 | HW-D-0077 | HW-D-0082 | HW-D-0083 | HW-D-0084 |
| HW-D-0085 | HW-D-0087 | HW-D-0088 | HW-D-0089 | HW-D-0091 | HW-D-0099 | HW-D-0101 | HW-D-0102 |
| HW-D-0106 | HW-D-0107 | HW-D-0108 | HW-D-0111 | HW-D-0134 | HW-D-0136 | HW-D-0137 | HW-D-0144 |
| HW-D-0146 | HW-D-0152 | HW-D-0154 | HW-D-0160 | HW-D-0162 | HW-D-0167 | HW-D-0170 | HW-D-0173 |
| HW-D-0183 | HW-D-0184 | HW-D-0185 | HW-D-0186 | HW-D-0190 | HW-D-0193 | HW-D-0194 | HW-D-0195 |
| HW-D-0205 | HW-D-0210 | HW-D-0217 | HW-D-0218 | HW-D-0241 | HW-D-0242 | HW-D-0243 | HW-D-0246 |
| HW-D-0259 | HW-D-0260 | HW-D-0263 | HW-D-0265 | HW-D-0271 | HW-D-0272 | HW-D-0275 | HW-D-0277 |
| HW-D-0278 | HW-D-0293 | HW-D-0313 | HW-D-0322 | HW-D-0341 | HW-D-0420 | HW-D-0421 | HW-D-0453 |
| HW-D-0455 | HW-D-0461 | HW-D-0462 | HW-D-0463 | HW-D-0467 | HW-D-0468 | HW-D-0475 | HW-D-0476 |
| HW-D-0477 | HW-D-0480 | HW-D-0485 | HW-D-0486 | HW-D-0517 | HW-D-0532 | HW-D-0541 | HW-D-0542 |
| HW-D-0548 | HW-D-0549 | HW-D-0564 | HW-D-0569 | HW-D-0570 | HW-D-0571 | HW-D-0572 | HW-D-0640 |
| HW-D-0642 | HW-D-0644 | HW-D-0645 | HW-D-0646 | HW-D-0687 | HW-D-0702 | HW-D-0740 | HW-D-0741 |
| HW-D-0750 | HW-D-0778 | HW-D-0781 | HW-D-0801 | HW-D-0863 | HW-D-0868 | HW-D-0871 | HW-D-0872 |
| HW-D-0873 | HW-D-0874 | HW-D-0875 | HW-D-0876 | HW-D-0880 | HW-D-0886 | HW-D-0905 | HW-D-0906 |
| HW-D-0907 | HW-D-0923 | HW-D-0925 | HW-D-0947 | HW-D-1153 | HW-D-1155 | HW-D-1156 | HW-D-1157 |
| HW-S-0133 | | | | | | | |

The appearance of a company's name or product in this database does not in itself assure that products so identified have been manufactured under UL's Follow-Up Service. Only those products bearing the UL Mark should be considered to be Listed and covered under UL's Follow-Up Service. Always look for the Mark on the product.

UL permits the reproduction of the material contained in the Online Certification Directory subject to the following conditions: 1. The Guide Information, Designs and/or Listings (files) must be presented in their entirety and in a non-misleading manner, without any manipulation of the data (or drawings). 2. The statement "Reprinted from the Online Certifications Directory with permission from Underwriters Laboratories Inc." must appear adjacent to the extracted material. In addition, the reprinted material must include a copyright notice in the following format: "Copyright © 2010 Underwriters Laboratories Inc."

All information based on current UL listings Q4-2023.

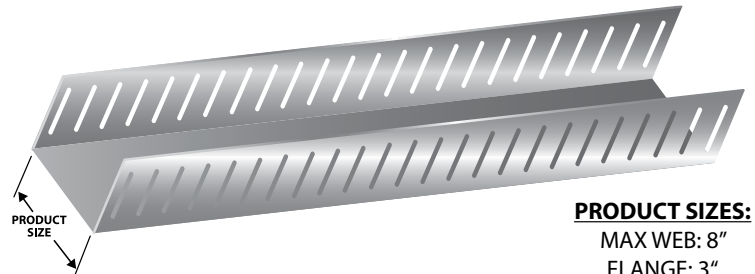
2.5" SLOTTED TRACK



PRODUCT SIZES:
MAX WEB: 8"
FLANGE: 2.5"

MATERIAL GAUGES:
.030" MINIMUM
.071" MAXIMUM

3" SLOTTED TRACK



PRODUCT SIZES:
MAX WEB: 8"
FLANGE: 3"

MATERIAL GAUGES:
.030" MINIMUM
.054" MAXIMUM



INNOVATION, SERVICE, QUALITY

www.BuildStrong.com • 1-866-372-6384



TELLING'S SUPREME STUD

Telling Industries is a proud member of the Supreme Steel Framing System Association for EQ Products. Our Supreme EQ UL File Number for EQ Non-Load Bearing Stud & Track products is R26537. Supreme products have been used for over 10 years in firewall assemblies for one and two hour designs.



SUPREME NON-STRUCTURAL EQ DRYWALL

| | | | | | | | | |
|------|------|------|------|------|------|------|------|------|
| U411 | U412 | U419 | U435 | U451 | U454 | U463 | U465 | U471 |
| U471 | U493 | U494 | U495 | U496 | V410 | V412 | V416 | V417 |
| V419 | V435 | V438 | V448 | V486 | V487 | V496 | V498 | W440 |
| W461 | V488 | W496 | W425 | | | | | |

The appearance of a company's name or product in this database does not in itself assure that products so identified have been manufactured under UL's Follow-Up Service. Only those products bearing the UL Mark should be considered to be Listed and covered under UL's Follow-Up Service. Always look for the Mark on the product.

UL permits the reproduction of the material contained in the Online Certification Directory subject to the following conditions: 1. The Guide Information, Designs and/or Listings (files) must be presented in their entirety and in a non-misleading manner, without any manipulation of the data (or drawings). 2. The statement "Reprinted from the Online Certifications Directory with permission from Underwriters Laboratories Inc." must appear adjacent to the extracted material. In addition, the reprinted material must include a copyright notice in the following format: "Copyright © 2010 Underwriters Laboratories Inc."

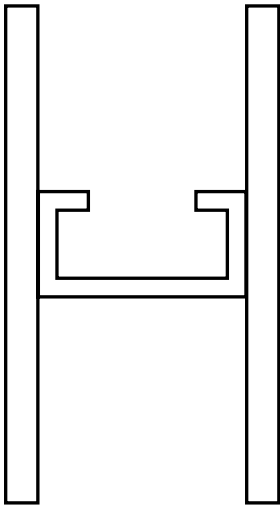
All information based on current UL listings Q4- 2023.

UL APPROVED DESIGNS

1-5/8" - 2-1/2" - 3-5/8" - 4" - 6"

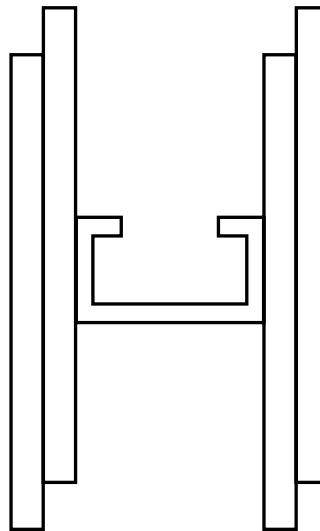
ONE-HOUR WALL ASSEMBLY

- Studs spaced 24" oc
- One layer of gypsum wallboard (GWB per UL design assembly)
- No insulation required
- Chase walls with 2 Supreme studs, 1 layer of gypsum, and no insulation also achieve 1 hour ratings



TWO-HOUR WALL ASSEMBLY

- Studs spaced 24" oc
- Two layers of gypsum wallboard (GWB per UL design assembly)
- No insulation required
- Chase walls with 2 Supreme studs, 2 layers of gypsum, and no insulation also achieve 2 hour ratings



UL RATED WALL DESIGNS UTILIZING TRADITIONAL DRYWALL 33MIL:

- U425, U423, U418, W469, W465



INNOVATION, SERVICE, QUALITY

www.BuildStrong.com • 1-866-372-6384

